



OAK HOUSE

BROMLEY BR2

OAK HOUSE

Contemporary two bedroom duplex
apartments within walking distance
of Bromley Town Centre.







Perfectly nestled between Bromley and Hayes, Oak House is a contemporary new development of two bedroom duplex apartments.

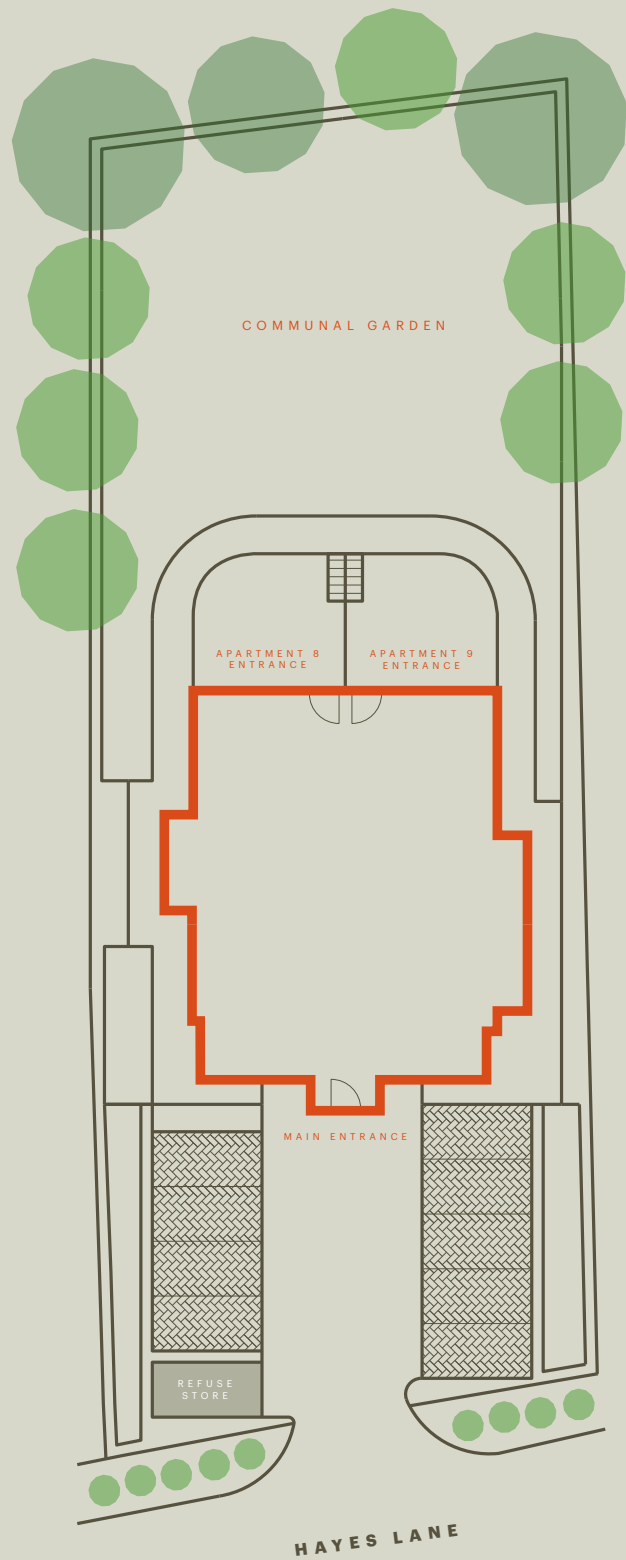
Each apartment has been expertly crafted and uniquely designed, providing wonderful open-plan living spaces with high specification kitchens complete with integrated Neff appliances, Quartz stone worktops and soft close doors and draws. Bedrooms are spacious and come fully fitted with carpets whilst bathrooms/en-suites are modern and fully tiled.

There is zoned underfloor heating throughout all apartments, a large beautifully landscaped garden for all residents to enjoy and selected apartments also benefit from their own private terraces.









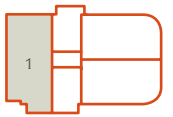
FLOORPLANS

Apartment 1

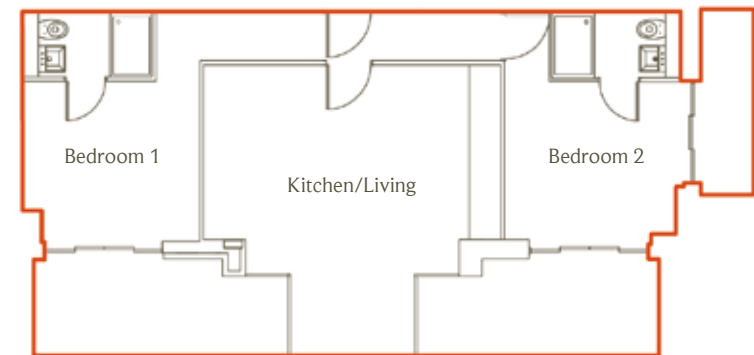
Kitchen/Living 5.4 x 5.3m

Bedroom 1 3.6 x 2.9m

Bedroom 2 3.5 x 2.9m



Lower Ground Floor



Apartment 2

Kitchen/Living 4.8 x 3.9m

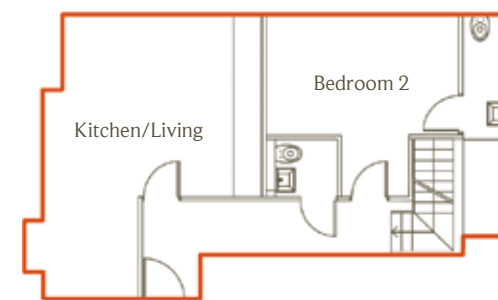
Bedroom 1 3.6 x 3.2m

Bedroom 2 3.4 x 2.4m



Ground Floor

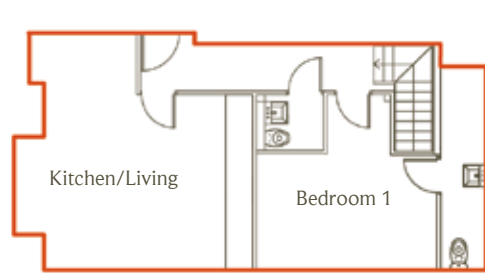
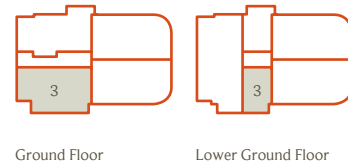
Lower Ground Floor



FLOORPLANS

Apartment 3

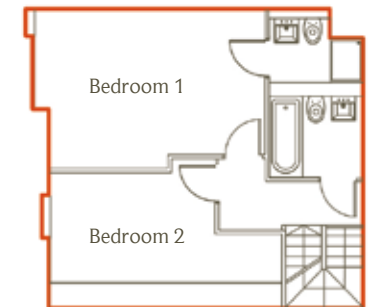
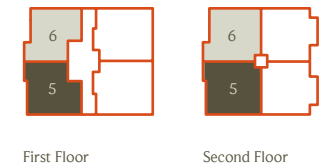
Kitchen/Living 5.1 x 5.4m
 Bedroom 1 3.6 x 3.2m
 Bedroom 2 3.4 x 2.4m



FLOORPLANS

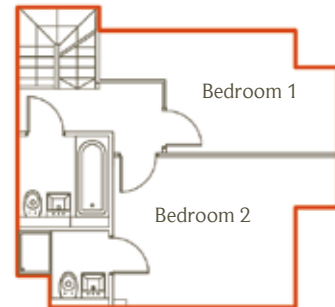
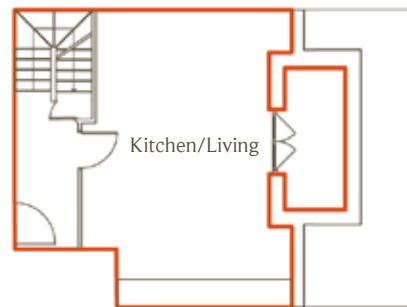
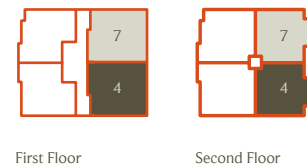
Apartments 5 & 6

Kitchen/Living 6.1 x 4.8m
 Bedroom 1 3.3 x 3.2m
 Bedroom 2 3.2 x 2m



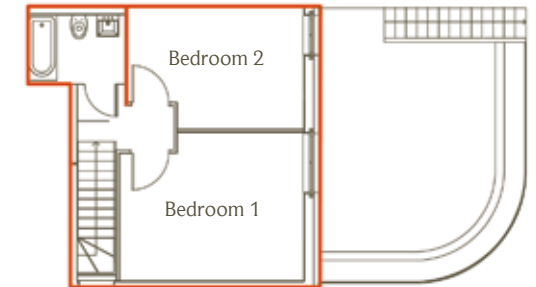
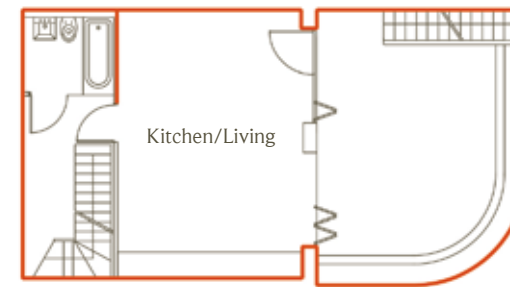
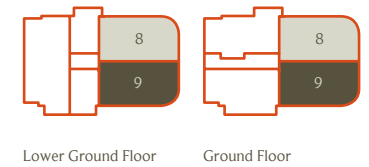
Apartments 4 & 7

Kitchen/Living 6.2 x 3.7m
 Bedroom 1 3.3 x 2.8m
 Bedroom 2 2.2 x 2m



Apartments 8 & 9

Kitchen/Living 6.1 x 4m
 Bedroom 1 2.8 x 4.1m
 Bedroom 2 3.4 x 4.2m



SPECIFICATION



General

- Zoned underfloor heating throughout
- Smoke alarm
- Video door entry
- Sky Q
- BT open reach
- Led downlights throughout
- Carpets to bedrooms
- Carpet to stairs/landing
- Engineered walnut-effect wood flooring to lounge & hallway

Bathroom/ Ensuites

- Fully Tiled
- Glass Shower Screen over Bath
- Thermostatic controlled shower
- Vanity Unit
- Mirror wall cabinet with lights
- Underfloor heating
- Contemporary floor standing W.C

Kitchen

- Quartz Stone worktops
- Integrated NEFF appliances including:
 - Induction hob
 - Oven
 - Washer/dryer
 - Fridge/freezer
- Worcester combi boiler and with Magna clean filter
- Contrast handleless units with soft-close doors and draws







LOCATION

One of London's greenest and most popular Borough's, Bromley is a highly desirable place to live.

Bromley Town Centre is just a few minutes away and offers the complete retail experience. From small boutiques and independent stores, to high street staples and chains, there are no shortages of places to shop. Eating and drinking options are plentiful, with a number of highly regarded restaurants, cafés, pubs and bars to choose from.

There has been a huge recent investment in the area which has seen the introduction of the St Marks entertainment quarter at Bromley South, housing a multi-screen Vue cinema and a number of restaurants. Whilst Bromley North has been transformed into an ambient and

cosmopolitan area for both traditional and contemporary dining, as well as après-dinner entertainment.

Away from the hustle and bustle of Bromley Town Centre, Hayes is just a short stroll away and is a popular high street offering all key amenities including independent cafés and restaurants, dry cleaners, hairdressers and banks.

The open space of Norman Park Recreation Ground, complete with athletics track, is on your doorstep, whilst Keston and Hayes Common's are within close proximity.



TRANSPORT

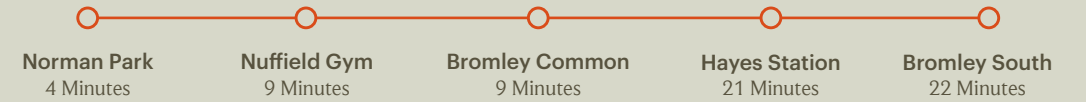
Both Bromley South and Hayes station's offer direct services into several Central London stations in under 45 minutes.

Oak House is only minutes away from Hayes Station, offering excellent direct links into London Bridge, Waterloo East & Charing Cross from just 30 minutes. A short bus journey away, Bromley South provides fast services

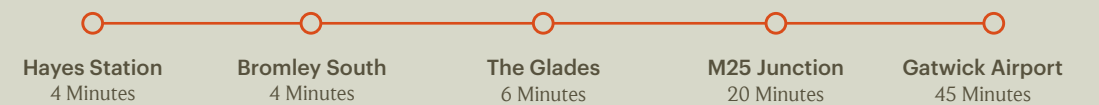
into London Victoria (18 mins) as well as other Central London stations such as Elephant & Castle for the Bakerloo and Northern lines, and London Blackfriars.



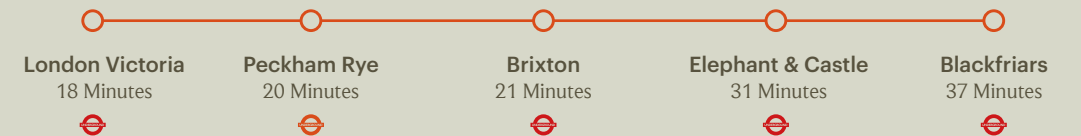
ON FOOT



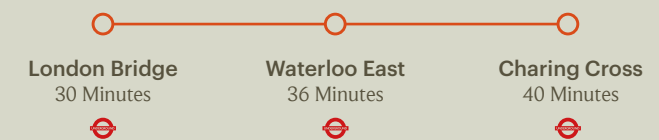
BY CAR



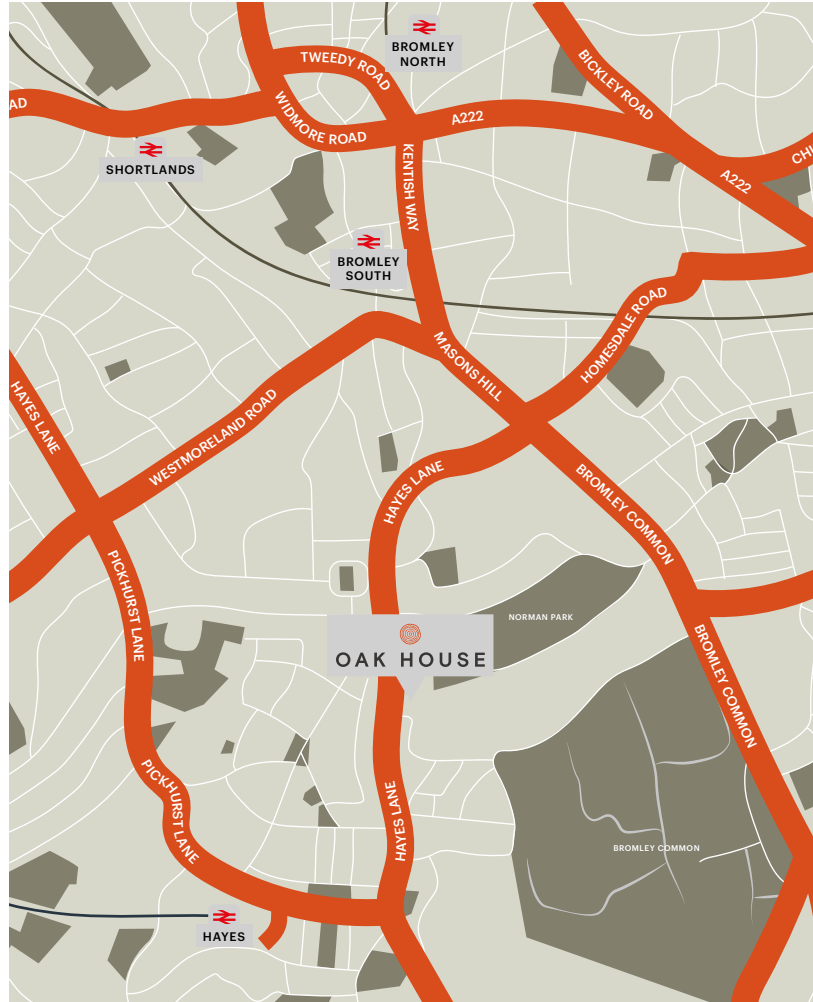
TRAINS FROM BROMLEY SOUTH



TRAINS FROM HAYES



Distances and travel times supplied by Google Maps and TfL.



FOR MORE INFORMATION CONTACT

020 8315 6996
acorngroup.co.uk/newhomes
newhomes@acorngroup.co.uk



These particulars are provided as a guide to what is being offered and are subject to contract and availability. Whilst showing the general specification and design of the properties we reserve the right and liberty at our discretion to amend or vary. All measurements are approximate and taken at the maximum points and should not be relied upon. Layouts, sizes and specification are not final and may change at the developer's discretion. We advise that any prospective purchasers employ their own independent experts to verify the statements herein. Map for reference purposes only. Not to scale. All information and images provided are the property of Acorn and may not be used or replicated in part or full without prior permission from Acorn.

